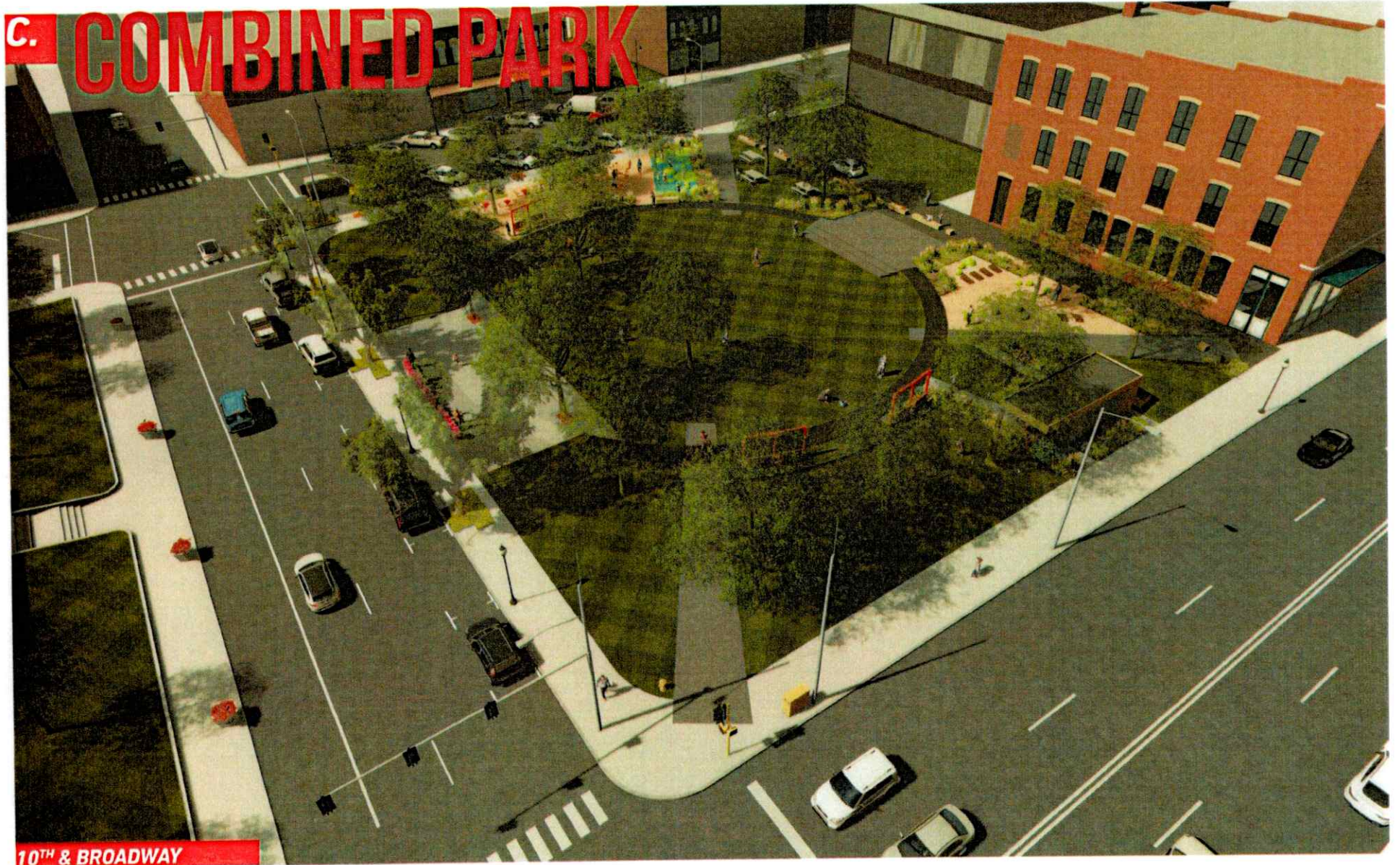


C. COMBINED PARK



10TH & BROADWAY

C. COMBINED PARK



- FINISHES KEY**
- ASPHALT
 - COMPACTED AGGREGATE
 - CONCRETE PAVING
 - LAWN
 - EXTENT OF WORKS

COST: \$ 2,020,000



BROADWAY



10TH & BROADWAY

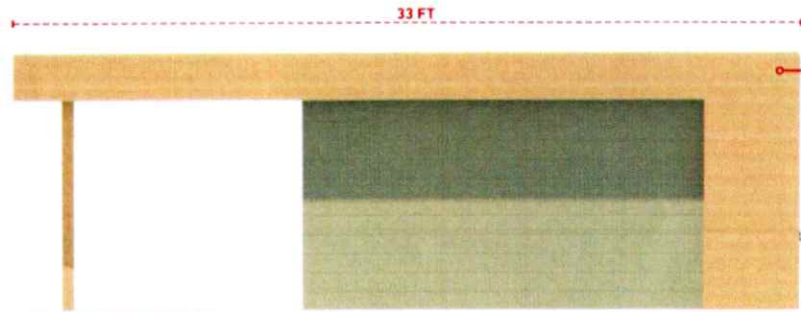


9TH STREET



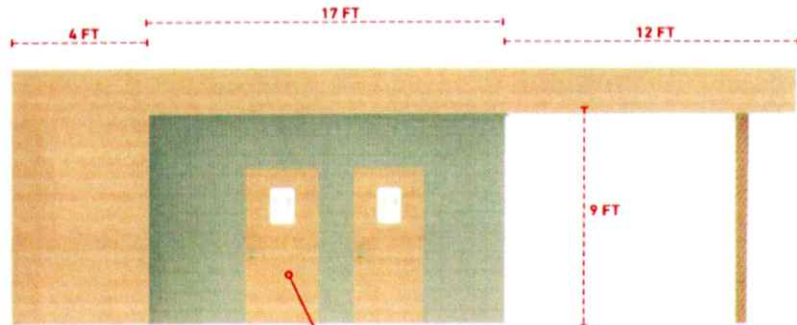
9TH & ALLEY

D. REST ROOMS - PREFERRED



10TH STREET ELEVATION

TIMBER FRAMED AND CLAD REST ROOMS



PARK SIDE ELEVATION

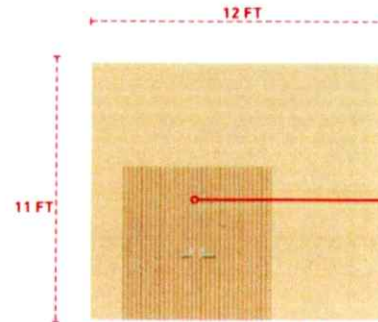
2NO. ADA COMPLIANT UNISEX TOILETS WITH FOLD DOWN CHANGING TABLE

REST ROOM ENTRANCE FROM PARK

HOURS OF USE:

- TO BE CONFIRMED BY MT VERNON CITY

- RECOMMENDED 6AM - 10PM, LOCKED OVER NIGHT



END ELEVATION - STORAGE

STORAGE ROOM INCLUDED

INCLUDED IN COMBINED PARK COST